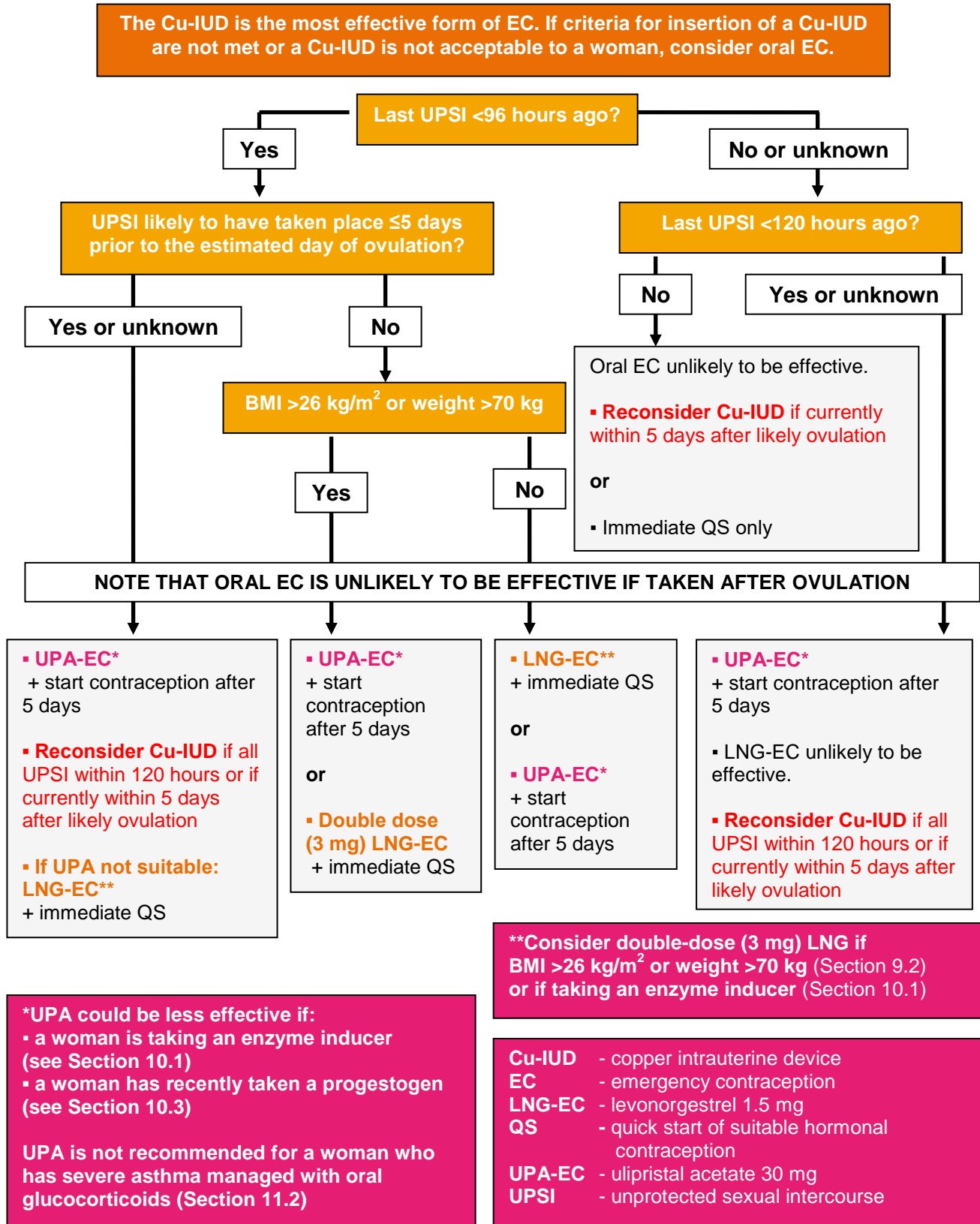


**Algorithm 2: Decision-making Algorithm for Oral Emergency Contraception (EC):
Levonorgestrel EC (LNG-EC) vs Ulipristal Acetate EC (UPA-EC)**



****Consider double-dose (3 mg) LNG if BMI >26 kg/m² or weight >70 kg (Section 9.2) or if taking an enzyme inducer (Section 10.1)**

***UPA could be less effective if:**

- a woman is taking an enzyme inducer (see Section 10.1)
- a woman has recently taken a progestogen (see Section 10.3)

UPA is not recommended for a woman who has severe asthma managed with oral glucocorticoids (Section 11.2)

Cu-IUD - copper intrauterine device
EC - emergency contraception
LNG-EC - levonorgestrel 1.5 mg
QS - quick start of suitable hormonal contraception
UPA-EC - ulipristal acetate 30 mg
UPSI - unprotected sexual intercourse