

Pharmacy Contraception Service (PCS): What GPs & Sexual Health Clinics Need to Know

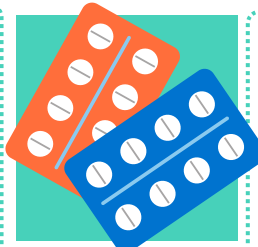
The PCS can help reduce pressure on GP practices and sexual health clinics



The service offers **greater choice from where people can access contraception services** and can create **additional capacity** in primary care and sexual health clinics.



Helping to support meeting the demand for more complex assessments.



Pharmacists and pharmacy technicians can independently **initiate and can continue provision of oral contraceptives** initiated in primary care (including GPs and pharmacies) or sexual health clinics.



Emergency contraception can now also be provided under this service.

As pharmacies are **highly accessible**, pharmacists and pharmacy technicians providing the service can **help address health inequalities** by providing wider healthcare access in their communities.

They can also signpost service users to local sexual health services.



People can access the service by:

- Being **identified as clinically suitable by the community pharmacist or pharmacy technician** and accepting the offer of the service.
- **Self-referring** to a community pharmacy.
- **Being signposted by their GP.**
- **Being signposted by a sexual health clinical** (or equivalent).
- **Being signposted by other NHS service providers**, e.g. urgent treatment centres or NHS 111.



Consultations can only be provided **directly with the person accessing the service**, and for whom the medication is for.

Where the person consents, any oral contraception supplied is **recorded in the patient's GP records** via GP Connect Update Record.

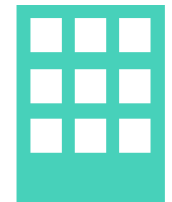


This provides visibility of the consultation and supply of contraceptive to other healthcare professionals.



Supplies are authorised via Patient Group Directions with appropriate checks, such as the measurement of the person's BP and BMI, being undertaken, where necessary.

Supplies on initiation will **not exceed 3 months**. Ongoing supplies will be for a **minimum of 6 months**, but **up to 12 months** can be supplied.



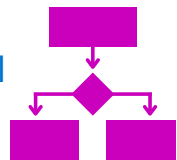
If a supply is **not clinically appropriate**, the individual will be referred to their GP or sexual health clinic.



<https://www.cpw.org/pharmacy-contract-services/advanced-services/pharmacy-contraception-service/>

More information about the service can be found on our website by scanning the QR code.

Eligible individuals seeking supplies of oral contraceptives can be considered for:



- **Emergency contraception** – an individual of childbearing age
- **Combined Oral Contraceptive** – from menarche up to and including 49 years of age
- **Progestogen Only Pill** – from menarche up to and including 54 years of age (49 for Drospirenone)

Please refer suitable individuals to the service at their chosen community pharmacy