

Pharmacy Level 1 Sexual Health Scheme

Wakefield

For further details of this scheme please refer to the contract document.

Who, in the population is this scheme aimed at?

The under 25 female resident population, residing at a Wakefield postcode address (eligible postcodes/areas **insert** who have had unprotected sex in the last 72 for Levonorgestrel (LNG) and 120 hours for Ulipristal (UPA). The patient should always be advised that the copper intra-uterine device is the recommended, most effective method of post coital contraception, and if accepting refer in to sexual health services. If out of hours or not acceptable then the oral methods may be provided. The provision of the appropriate medication should be based on Faculty for Reproductive and Sexual Health Guidelines CEU Clinical Guidance: Emergency Contraception 2017 [March Update].

Which medication is on offer?

Levonorgestrel (LNG) (1500mg), issued via Patient Group Direction. Ulipristal (UPA) 30mg issued as a P Medicine.

Costs/Charges.

There will be a reimbursement of the actual wholesale drug costs (NHS Tariff £5.20 for LNG and £14.05 for UPA + VAT @5%) and additional payment of £15/consultation for pharmacists involved in this scheme.

Who will give out the medication?

Pharmacists who have signed up to the scheme are declaring their own competency in relation to the supply of these medicines; and should where required be able to provide evidence of a recent (within 3 years) of this competency. The pharmacist should make themselves familiar with the Faculty for Reproductive and Sexual Health Guidelines CEU Clinical Guidance: Emergency Contraception December 2017.

Service delivery

Services need to be easily accessible
Ideally the consultation needs to be face to face but telephone/video consultation is acceptable if exceptional circumstances (disability, shielding, C19 symptoms/isolation).
Open extended hours including evenings are weekends (this is not essential especially if you are in an area of high need).
Locum pharmacists who feel they are competent to deliver EHC can sign the contract to deliver EHC in the pharmacy they are locum in.

What else can the patient expect to receive at this visit?

If the patient has been initiated on Emergency Contraception, the patient should be given advice on where/how to access condoms, STI risk, and on-going contraception risk, and be consented for a referral to be made in to integrated sexual health services in order for there to be routine follow up after emergency contraception, (e.g Menses, Pregnancy Test, STI testing, and on-going contraceptive needs met).

What next for the patient?

The patient should be consented for their details to be referred in to Sexual Health Services at The Trinity Centre and ensure they provide consent for SHS to contact them in 3 weeks by ISHs to ensure:

- They have obtained/recommended a reliable method of contraception
- They have had a period, if not they will need to do a pregnancy test.
- Consented for a chlamydia postal kit to be sent out
- Appointment for any further/on-going care if required

Safeguarding vulnerable young people.

If the patient is under 19 there will be an expectation that there is a safeguarding risk assessment in line with the national standards. If the patient is under 16 then an additional assessment of Fraser Competence will also be required. Referral into the service is significantly more important with young people as it means we will have an audit trail of where the patient is attending and it prevents young people being trafficked around services by exploiters as it is on one central record. It is expected that the pharmacist will be up to date with their safeguarding level 2 mandatory training.

Referrals to ISHs

Referrals can be made by phone or by sending the consultation assessment form through to BISH via Pharmoutcomes.

Fees

Spectrum will pay £15/consultation, and NHS Tariff price (+VAT) for LNG and UPA.

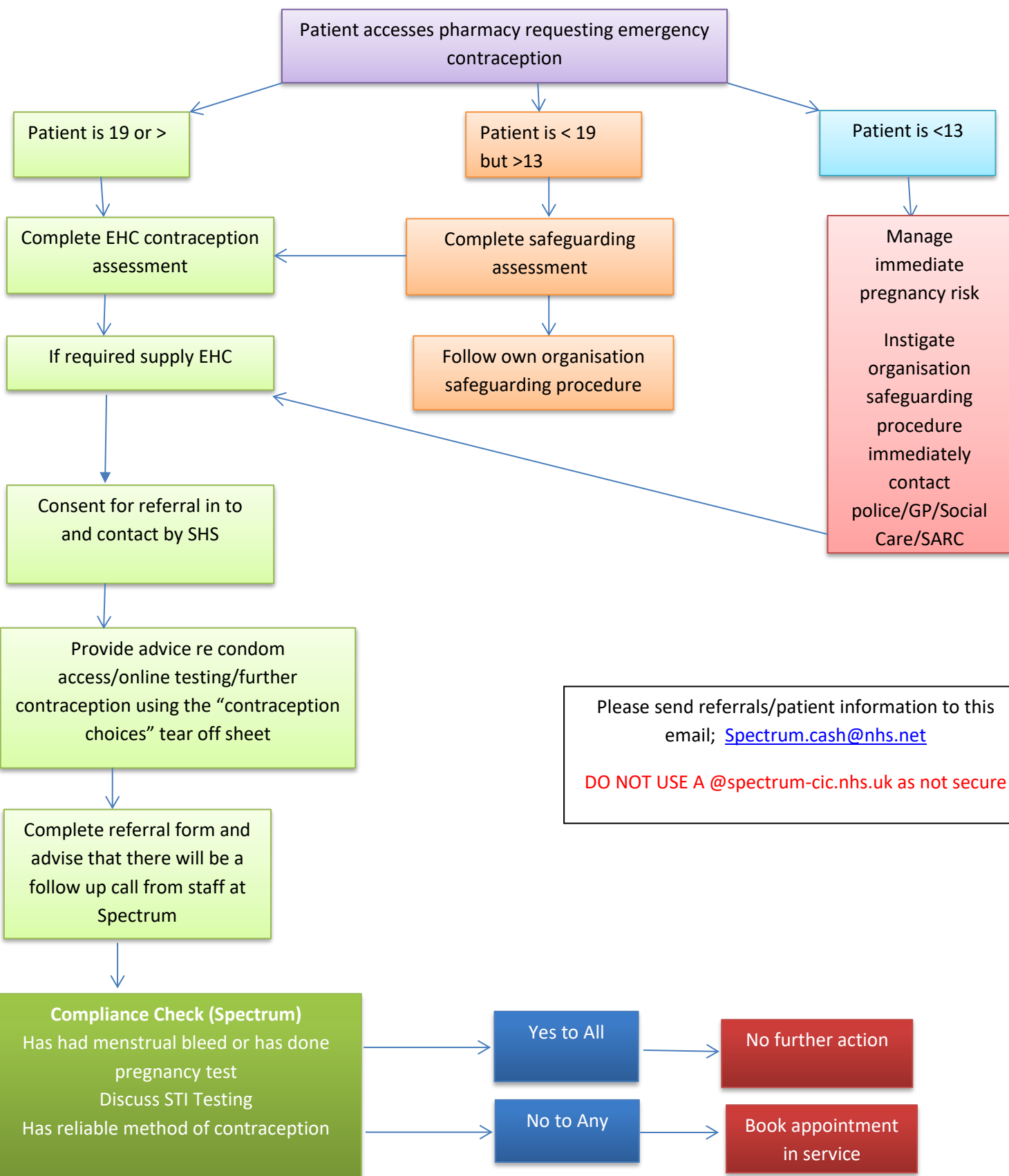
Condoms

The pharmacy wishes they can sign up to the C-Card Scheme which will involve some brief training and registration with the website, you are then able to order condoms as required through the website in order to provide to those young people accessing the service. To arrange training please contact the service 0800 055 6442 and ask to speak to a member of staff in relation to the C-Card Scheme.

Data

As part of quality assurance, there is an expectation that an annual a report is submitted, the inclusions for that report are in the contract Page 20. Currently by Pharmoutcomes.

Level One (Pharmacy) Sexual Health Service Pathway



Please send referrals/patient information to this email; Spectrum.cash@nhs.net
DO NOT USE A @spectrum-cic.nhs.uk as not secure