

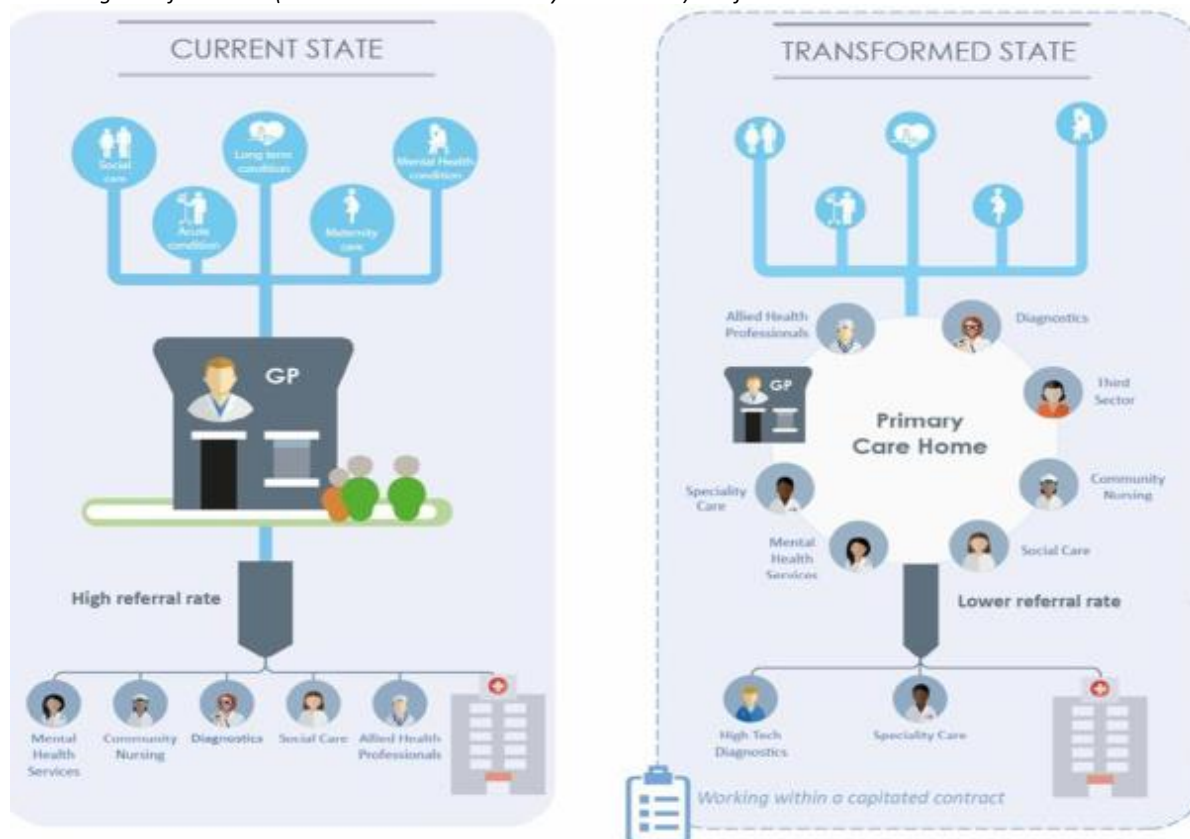
Primary Care Networks: Briefing for Wakefield Pharmacies - March 2019

What is a Primary Care Network?

Primary Care Networks (PCN) are an approach to strengthening and redesigning health and social care by bringing together a range of health and social care professionals to work together to provide enhanced personalised and preventative care for their local community. All sectors come together as a complete care community – drawn from GP surgeries, community, mental health and acute trusts, social care and the voluntary sector – to focus on local population needs and provide care closer to patients’ homes. General practice will be at the heart of the Primary Care Networks, but NHS England has made it clear it wants additional people to work alongside GPs in the networks.

The vision is that Primary Care Networks will have aligned clinical and financial aims and a unified, capitated budget. The Primary Care Network will make joint decisions on how the funding is spent working towards a combined focus on personalisation of care with improvements in population health outcomes. i.e. they will have money and will be allocating how this is spent within their communities.

NAPC diagram of how PCN (in some areas called Primary Care Homes) will function



What's happening now?

The NHS England five-year funding package for GPs includes funding that will help the widespread development of Primary Care Networks to drive forward the transformation local healthcare systems.

The GP practices in Wakefield are pro-actively developing their Primary Care Networks. Each GP practice has been aligned into a Primary Care Network. The basis of each Primary Care Network is a registered population of 30,000 to 50,000 patients. Wakefield are using the NAPC Primacy Care Home model for their Primary Care Networks.

Why is this relevant to community pharmacy?

For community pharmacy the changes offer a unique opportunity for us to embed ourselves further within primary care. GPs will be bringing together local healthcare providers into the Primary Care Networks and we must engage proactively with them and find ways to position ourselves within those Primary Care Networks. All pharmacies will need to take steps to work as closely with local GPs as they can. Success will also involve transforming the services that we offer, and community pharmacies will need to be ready for radical changes, such as partnering with other contractors to jointly meet the needs of their local Primary Care Network.

Community Pharmacy West Yorkshire see that it is essential that community pharmacy is part of every Primary Care Network. We need to ensure that there is a clear community pharmacy voice in each Primary Care Network - after all, community pharmacy is an essential part of primary care. If we are not part of the Primary Care Network there is the chance that the system will evolve without community pharmacy and that opportunities to better use the skills of community pharmacy teams and for new commissioned services are lost.

I have other pharmacies outside of Wakefield - what is happening in these areas?

Leeds, Bradford, Calderdale and Airedale, Wharfedale and Craven (AWC) CCG areas have already implemented Primary Care Networks. In these areas the Primary Care Networks meet regularly and most (but not all) Primary Care Networks have a nominated community pharmacy representative. Community Pharmacy West Yorkshire wrote to all contractors in these areas in January to inform them of the name of their Primary Care Network community pharmacy rep or to let the contactor know that no rep had been identified and to ask for people to come forward to be the rep.

Kirklees and Wakefield are actively forming their PCN and Community Pharmacy West Yorkshire wrote in March to all contractors in these areas providing an update, their pharmacy PCN alignment and asking for community pharmacy representatives to come forward.

Want to know more details?

NHS England outline the model (includes a video clip)
<https://www.england.nhs.uk/gp/gpfpv/redesign/primary-care-networks/>.

The move to an integrated health and care system is outlined in this NHS clip:
<https://www.youtube.com/watch?v=3YdIV1DsK54&feature=youtu.be>.

NAPC Guide Primary Care Home: community pharmacy integration and innovation
<http://npsc.co.uk/pharmacyandpchgguide/>.

