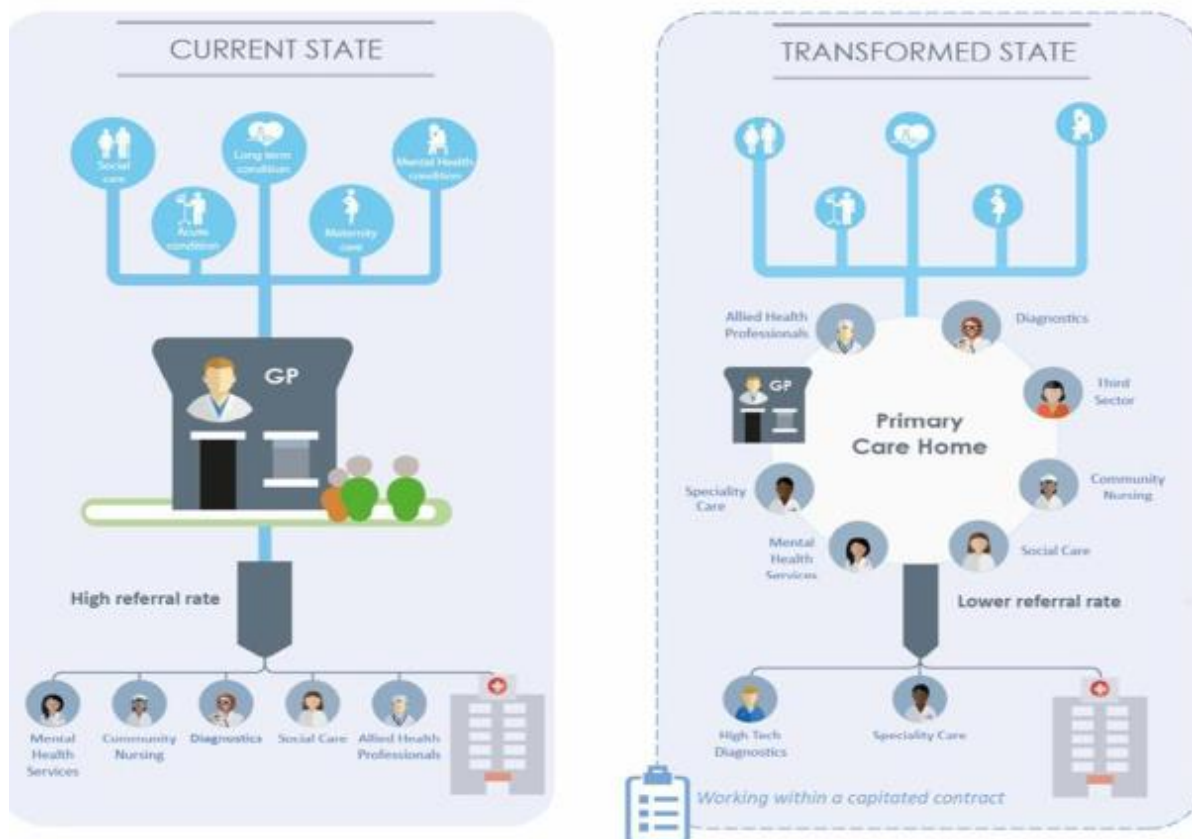


Primary Care Home – Briefing for Bradford Pharmacies

What is a Primary Care Home?

Primary Care Home is an innovative approach to strengthening and redesigning primary care. Developed by the National Association of Primary Care (NAPC), the model brings together a range of health and social care professionals to work together to provide enhanced personalised and preventative care for their local community. Ultimately, staff come together as a complete care community – drawn from GP surgeries, community, mental health and acute trusts, social care and the voluntary sector – to focus on local population needs and provide care closer to patients’ homes.

The NAPC describes four core characteristics of a Primary Care Home



What’s happening now?

The GP practices in Bradford CCGs are pro-actively developing the Primary Care Home model and are moving forward with setting up and developing the Primary Care Home communities. These teams will be made up of representatives from primary and social care. The basis of each Primary Care Home community is a registered population of 30,000 to 50,000 patients. Each GP practice has been aligned into a Primary Care Home community.

What will Primary Care Home be in the future?

The vision is that Primary Care Homes will have aligned clinical and financial aims and a unified, capitated budget. The Primary Care Home communities will make joint decisions on how the funding is spent working towards a combined focus on personalisation of care with improvements in population health outcomes. i.e. they will have money and will be allocating how this is spent within their communities.

Why is this relevant to community pharmacy?

Community Pharmacy West Yorkshire see that it is essential that community pharmacy is part of any Primary Care Home community. We need to ensure that there is a clear community pharmacy voice in each Primary Care Home community - after all, community pharmacy is an essential part of Primary Care. If we are not part of the Primary Care Home community teams, there is the chance that the system will evolve without community pharmacy and that opportunities to better use the skills of community pharmacy teams and for new commissioned services will be lost.

I have other pharmacies outside of Bradford - what is happening in these areas?

Leeds is also implementing the Primary Care Home model which in Leeds is being called Local Care Partnerships. The GP practices in the Leeds CCGs have aligned into Primary Care Home / Local Care Partnership neighbourhoods and in some areas of Leeds the meetings are already up and running.

It is likely that other areas will also implement the Primary Care Home model, but the scale and pace of this will be different in each CCG area. Community Pharmacy West Yorkshire will keep you informed as other areas look to implement Primary Care Home.

Want to know more details?

More details about Primary Care Home can be found on the NAPC website: <http://npsc.co.uk/wp-content/uploads/2017/10/PCH-brochure-2017.pdf>.

